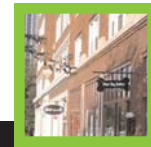
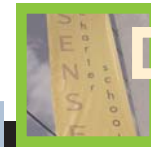


# LISC Indianapolis: Fact Sheet

## LISC Programs



**Mission Statement:** Local Initiatives Support Corporation (LISC) Indianapolis helps resident-led, community-based development organizations transform distressed communities and neighborhoods into healthy ones — good places to live, do business, work and raise families.

**LISC operates on three levels by:**

1. Providing direct assistance to individual Community Development Corporations (CDCs). LISC acts as an intermediary between more than 900 corporations and foundations to provide technical and financial assistance so local CDCs can become strong and capable neighborhood institutions.
2. Improving local community development environments through local programs to ensure that CDCs have the necessary resources to produce redevelopment results that will stimulate permanent community renewal.
3. Strengthening national support for community development by bringing national resources to local programs, and as an advocate for CDCs, enhancing the visibility and credibility of neighborhood-based development.

**National LISC:** Begun 25 years ago with an initial capitalization of \$10 million, LISC has invested over \$6 billion into 3,000 local economic development groups and has funneled as much as \$720 million a year in grants, loans, and equity investments into their projects.

## Investment Summary

In Indianapolis, LISC's investments of almost \$30 million in loans, recoverable grants, loan guarantees, and outright grants have resulted in significant achievements over the years.

First Indianapolis investment:	1981
Local office established:	1992
Affordable homes built, renovated, and impacted:	Over 2,900 units
Commercial and industrial space developed:	Over 1,450,000 sq. ft.
Number of community development programs assisted:	26
Grants from national foundations obtained for Indianapolis:	Over \$6 million
Total Indianapolis LISC program activity:	Almost \$30 million
LISC's National Equity Fund local project housing investments:	\$60 million
Total LISC investment in Indianapolis:	<b>Over \$90 million</b>
Additional dollars leveraged by LISC and its affiliates:	Over \$308 million

**Affordable Housing:** Provides development funds and construction financing to help CDCs develop rental and resident-owned homes.

**Fostering Commercial Urban Strategies (FOCUS):** A comprehensive commercial revitalization program with several partner organizations, the FOCUS initiative encompasses several LISC programs, including:

*Technical Assistance Program* – Offers quick and flexible funding to help CDCs and other organizations acquire real estate.

*Commercial Facade Improvement Program* – Assists business owners in making visible improvements to the fronts of their properties.

*Brownfields Grant & Loan Program* – Helps transform potentially contaminated sites into usable properties.

*Small Business Loan Fund* – Offers loans for business expansion on commercial corridors.

*Strategic Acquisitions Fund* – The Strategic Acquisitions fund provides CDCs with a quick and flexible funding source to acquire targeted sites. The funds will empower CDCs to speculatively acquire sites that are ripe for redevelopment.

**Indy Site Finder:** [www.indysitefinder.com](http://www.indysitefinder.com)  
The Indy site finder is a unique tool that allows developers, prospective business owners and community leaders to search for commercial, industrial, and retail property.

The Indy Site Finder also provides demographic information, business data, maps and information to encourage redevelopment of vacant or underutilized sites.

**Charter Schools:** Capitalized in 2005, the Indianapolis Charter Schools Facilities Fund assists new charter schools in securing facilities.

**NFL Youth Football Fund's Grassroots Program:** In partnership with the National Football League's NFL Youth Football Fund, the program provides funding to improve neighborhood football fields.

**Great Indy Neighborhoods:** Great Indy Neighborhoods is a citywide collaboration that uses the principles of healthy neighborhoods to help mobilize neighborhood stakeholders and empower them to implement quality of life plans for their neighborhoods.

**For further information, please contact:**

Local Initiatives Support Corporation  
333 North Pennsylvania Street  
Indianapolis, IN 46204  
(317) 396-0588

[www.lisc.org/indianapolis](http://www.lisc.org/indianapolis)

